



®

CORGI direct

● CHRISTMAS 2006



**Our massive 40 page
Christmas issue** featuring
the latest in Corgi Die-cast
from all your favourite ranges.

Corgi - Making the Great Small



In this issue

- 3 TV & Film
- 4-5 Anniversary - RANGE OF THE MONTH
- 6-9 Original Omnibus
- 10-11 Days Gone
- 12-17 Vanguards
- 18-19 Winter Specials
- 20-23 Road Transport
- 24-27 TV & Film
- 28-29 Superhaulers
- 30-31 Mini Mania
- 32-35 Trackside
- 36 Warbirds
- 37 Corgi Collection
- 38-39 Forward March
- 40 Mini Diorama

Dear Collector,

I suppose it might seem a bit of a cliché to offer you a perfectly designed and engineered 1:50 scale ERF ECT with a flatbed trailer, bearing the Oslo Christmas Tree, which is donated each year by the people of the Norwegian capital to the people of London, and erected annually in Trafalgar Square. But can you think of a more inclusive symbol of Christmas in Britain, and what better to mark that special time for us all, can you begin to imagine?

This 40-page catalogue features nearly 120 precision die-cast models, of which about one-third are now issued to collectors from Corgi direct. Leaf through its pages, and I'm sure there'll be something to spark the idea. I do hope so, especially as Christmas comes around once again.

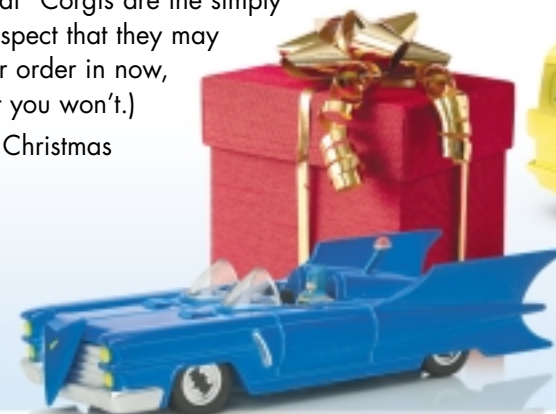
Somebody said to me not so long ago, that "Corgis are the simply world's best under-the-tree surprises". I suspect that they may have been for over 50 years. So put your order in now, and see if you can prove me wrong! (Bet you won't.)

My very kindest regards for a very merry Christmas to you and yours,

Claire Winter

Claire Winter
Direct Marketing Manager

Limited Edition quantities correct at time of going to print and may be subject to alteration. Certain models photographed in this catalogue are hand finished prototypes. The final quality of factory-produced models will be superior. All measurements are approximate. Corgi reserve the right to improve and amend specifications on all models.



Thunderbirds FAB 1

Celebrate a remarkable British innovation in the form of 'supermarionation', a revolutionary technique for achieving perfect lip sync between pre-recorded dialogue and sensors in the puppets' heads. Here is FAB1, complete with Lady Penelope and Parker.

Ref: CC00601 £14.99
Approx. length 147mm



Ford Capri & Robin Reliant Set - Only Fools & Horses

The exploits of Del and Rodney are lovingly recalled

with a pair of what became the most unlikely famous vehicles on television. This delightful set is released under licence from the BBC.

Ref: CC99111 £19.99 Scale 1:36
Approx lengths: Capri 120mm, Reliant 85mm



Wallace & Gromit, Anti-pesto Van & Bun-vac Set

Launched simultaneously with the opening of The Curse of the Were-Rabbit, this set comprises detailed figures of Wallace and Gromit, their Anti-pesto die-cast van, and the telescopic action Bun-vac, another classic piece of technological wizardry from the Wallace workshop.

Ref: CC80502 £9.99 Approx. length 76mm

A PERFECT GIFT FOR ALL AGES!



post your order to: Corgi Classics Ltd., FREEPOST SO 4438, Southampton SO14 0HS (no stamp needed)

buy online at www.corgi.co.uk



Collectables | Anniversary - OUR RANGE OF THE MONTH!

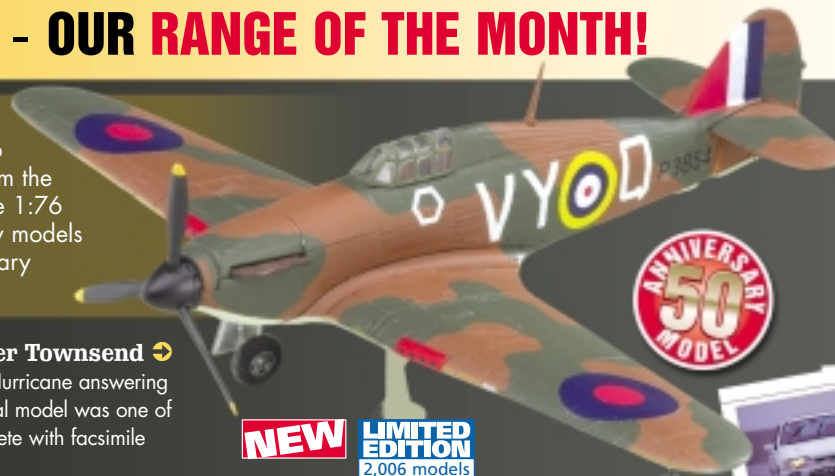
2006 EXCLUSIVE RANGE!

To mark the 50th Anniversary of the Corgi name, we have created a number of Special Editions, each limited to exactly 2,006 models. Each model replicates a key issue from Corgi's history, from the first 1:72 scale fighter aircraft first released in the year 2000, to the 1:76 scale Burlingtonham Seagull first issued in 1996. All 50th Anniversary models come with special Anniversary packaging, the Corgi 50th Anniversary booklet and a special memento relevant to the particular model.

Hawker Hurricane MkI - VY-Q, No.85 Sqn, RAF, Sqn Ldr Peter Townsend ➡

Originally cast in the year 2000, this special Anniversary Edition replicates the Hurricane answering to the call sign VY-Q of 85 Squadron, RAF flown by Peter Townsend. The original model was one of the first four 1:72 scale aircraft in the Aviation Archive. The model comes complete with facsimile Pilot's Notes for the Hurricane, and is issued in an edition of just 2,006 pieces.

Ref: AN32011 £59.99 Scale 1:72 Wingspan 167mm



Messerschmitt BF109E - Gruppenkommandeur Hauptmann Hans von Hahn ➡

The immortal fighter aircraft of the Luftwaffe is re-created here to exact 1:72 scale, complete with the striking nose 'war paint' of 'Vati' von Hahn, one of Germany's greatest, and most honourable, 'Knights of the Air'. Our Corgi 50th Anniversary model comes complete with the figure of von Hahn, who ended the war with 34 'kills', display plinth and pilot's notes for the Messerschmitt.

Ref: AN32107 £59.99 Scale 1:72 Wingspan 136mm



NEW

**LIMITED EDITION
2,006 models**

Ford Sierra Cosworth - Diamond White ➡

In the 1990s it was no contest, whether for performance, practicality, space, style or ease of maintenance, it was the Sapphire Cosworth. This model comes complete with a facsimile of the original Autocar road test.

Ref: AN10004 £29.99 Scale 1:43 Approx. length 104mm



**LIMITED EDITION
2,006 models**



Volvo FH Globetrotter Tanker - Mansel Davies ➡

Produced from new tooling for 2006, this 1:50 scale Volvo FH with its gleaming tanker has been chosen as the representative of Wales in the Corgi 50th Anniversary commemorative range. The Limited Edition comes with a wood effect plinth, a keyring featuring the Corgi 50th logo, and an Anniversary booklet.

Ref: AN14001 £99.99 Scale 1:50 Approx. length 285mm



NEW

**LIMITED EDITION
2,006 models**



Burlingham Seagull - Ulsterbus ➡

Issued in a special 50th Anniversary Limited Edition of just 2,006 models, this 1:76 replica of a Burlingtonham Seagull comes as the Northern Ireland representative in the four Original Omnibus Anniversary editions. The model comes with a wood effect plinth, a replica timetable, the Corgi 50th Anniversary booklet and Limited Edition Certificate.

Ref: AN40306 £49.99 Scale 1:76 Approx. length 125mm



**LIMITED EDITION
2,006 models**



order by phone on **023 8024 8844** 8am - 8pm, 7 days a week

buy online at **www.corgi.co.uk**



5

Collectables | Original Omnibus

Four new models are offered in the 1:76 scale Original Omnibus range of buses and coaches. Produced from new tooling for 2006, the Wrightbus Urban Eclipse is one of the most modern vehicles introduced into the OO fleet, modelling an original in service with Lothian Buses, while the newly tooled Guy Arab IV/Roe reproduces a bus from as long ago as 1953. The OO Collection really IS the history of British public transport from the 20th Century and beyond.



Wright Eclipse Gemini - East Yorkshire Motor Services ⚡
Our 1:76 scale replica models a Wright Eclipse Gemini that was one of the first batch of six delivered to EYMS as recently as 2005, and is of particular interest for being the only EYMS bus to carry a 'mega-rear' advertisement promoting the busy route from Hull city centre to the University.
6 Ref: OM41215 £24.99
Scale 1:76 Approx. length 160mm

LIMITED EDITION
2,260 models



Bristol Lodekka FS - United Welsh ⚡
WCY 712 entered service with United Welsh in 1961, running on a number of routes in and around the Swansea and Gower areas. Details of the model include full passenger seating, rear stairs, photo-etched wipers and authentic period advertising.
Ref: OM40813 £24.99 Scale 1:76 Approx. length 108mm

LIMITED EDITION
1,000 models



Dart SLF - Uno (Stenning) ⚡
The original of our model, KC03 OSE, is one of 30 low floor wheelchair-accessible Dennis Darts in the Uno fleet (formerly Universitybus, set up in 1992 by the University of Hertfordshire to provide student transport). Features of the model include full passenger seating, detailed driver's cab, photo-etched wipers and fine detail rear view mirrors.
Ref: OM44708 £19.99 Scale 1:76 Approx. length 140mm

NEW LIMITED EDITION
2,010 models



Wright Urban Eclipse - Lothian Buses ⚡
Running along the Edinburgh route publicised along the vehicle's roof line, this urban single decker features an advertisement for the route's most famous occupant, the former Royal Yacht Britannia, now moored permanently at Ocean Terminal.
Ref: OM46003 £24.99
Scale 1:76 Approx. length 157mm

LIMITED EDITION
3,260 models



NEW LIMITED EDITION
3,510 models NEW TOOLING

Van Hool T9 - Go Goodwins ⚡
The original of our model, registration C11 ECB, is one of the official England Cricket Team coaches, owned and run by Go Goodwins of Eccles, Manchester. Features include full passenger seating and extended rear view mirror configuration.
Ref: OM45906 £24.99
Scale 1:76 Approx. length 160mm



Wright Solar Fusion - First Bath ⚡
One of the brighter sights on the streets of Bath, the 12 bright orange B7 bendy-buses provide an impressive 1,400 seats per hour on their trans-city route. Features include photo-etched wipers, full passenger seating and, naturally, the bendy bit in the middle!
Ref: OM41308 £29.99
Scale 1:76 Approx. length 240mm

The 'Bendy Bus'

The 'Bendy Bus', more properly the Wright Solar Fusion, is a low floor articulated bus body, which is built for the Scania L94UA. It was first introduced into the United Kingdom in 1999, offering a significantly larger passenger 'payload' (up to 147) in a single-decker configuration. The real stroke of genius was in the insertion of the articulated section between the two sections; without it the bus would have been quite impractical as it would not have been able to negotiate most corners.

NEW LIMITED EDITION
2,010 models

post your order to: **Corgi Classics Ltd., FREEPOST SO 4438, Southampton SO14 0HS** (no stamp needed)

buy online at **www.corgi.co.uk**



7

Collectables | Original Omnibus



LIMITED EDITION
2,260 models

NEW TOOLING

AEC Regent V/Roe - Felix Motors

Produced from new tooling for 2006, this model reproduces a Regent MkV with fleet number 37, which entered service with the Yorkshire company in 1957. Features include precisely matched paint colours, full passenger seating and authentic destination boards.

Ref: OM41404 £24.99 Scale 1:76 Approx. length 157mm

Leyland PD3/E. Lancs. - Black Prince

FTF 702F, a Leyland Titan PD3/4 with an East Lancs. 70 seat body came into service with Black Prince in 1984. On the 30th July 2005, it had the sad privilege of taking part in the last day of Black Prince operations. Features of the model include detailed chrome trim and full passenger seating.

Ref: OM41111 £24.99 Scale 1:76 Approx. length 157mm

Roe Trolleybus - Maidstone Corporation

The original of this replica has an interesting history. It was originally a Sunbeam W produced in 1944, with a Park Royal UH30/26R body. It was rebodied in 1960 by Roe (H34/28R) in the form we see here, and can be seen in its preserved state at The Sandtoft Transport Centre, near Doncaster.

Ref: OM41405 £24.99 Scale 1:76 Approx. length 108mm



LIMITED EDITION
2,260 models



LIMITED EDITION
2,010 models



LIMITED EDITION
2,210 models

50% of the E. Lancs models produced will be Reg. No. **WA54 OLR, Fleet No. 32760 (Spoonbill)** and 50% **WA54 OLT, Fleet No. 32758 (Egret)**

The Tamar Link Set

This pair of rather unusual buses comes in precisely matched colour packaging, and in a Limited Edition. Each model carefully replicates its original, complete with full passenger seating, separately applied rear view mirrors, photo-etched wipers and authentic livery and badging.

Ref: OM99191 £44.99 Scale 1:76 Approx. lengths E.Lancs 145mm, Plaxton Beaver 101mm

Roe Motorbus/Guy Arab IV - Wolverhampton Corporation

Produced from new tooling for 2006, this 1:76 scale replica models a Guy Arab with the fleet number 572, one of a single batch of seven delivered in 1953 (the Guy Motors factory was situated in the town). The model features all the detail you would expect from Original Omnibus, including the rear stairs, passenger grab rail and accurate livery and badging.

Ref: OM41406 £24.99 Scale 1:76 Approx. length 108mm



50% of the Plaxton Beaver models produced will be Reg. No. **S412 GUB, Fleet No. 50306** and 50% **S407 GUB, Fleet No. 50301**



NEW

LIMITED EDITION
2,260 models

NEW TOOLING

8

Join our collectors club today! Log on @ **www.corgi.co.uk** for more details

order by phone on **023 8024 8844** 8am - 8pm, 7 days a week

buy online at **www.corgi.co.uk**



9

Collectables | Days Gone

The Days Gone range of little models of vintage and veteran commercial vehicles offers the most economical way to build a collection of die-cast models. Priced at just £4.99, each vehicle is decorated in carefully researched and executed liveries and/or advertising material from bygone days. New to the range are the milk float in Handsworth Dairies livery and the baker's van in the colours of the Birmingham Co-op.



LIMITED EDITION
2,000 models

Baker's Van - Birmingham Co-operative Society ➔
Ref: DG205000 £4.99
Approx length 73mm



LIMITED EDITION
1,500 models

Milk Float - Handsworth Dairies ➔
Ref: DG204000 £4.99
Approx length 73mm



LIMITED EDITION
2,000 models



LIMITED EDITION
1,500 models

Dennis Delivery Van - Shredded Wheat ➔
Ref: DG066033 £4.99
Approx length 88mm



LIMITED EDITION
1,500 models

Morris LD Van - Metropolitan Police ➔
Ref: DG071033 £4.99
Approx length 83mm



LIMITED EDITION
2,000 models

Sentinel 6 Wheel Flatbed - Tarmac ➔
Ref: DG098002 £4.99
Approx length 82mm



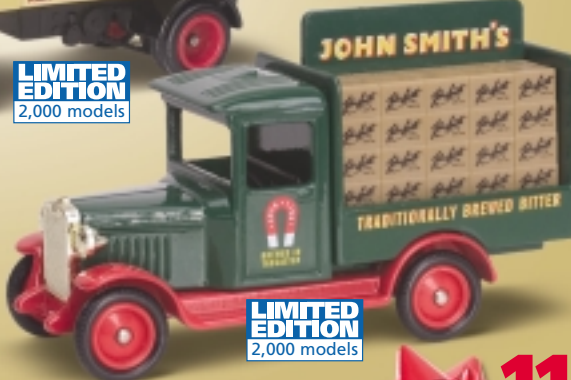
LIMITED EDITION
2,000 models

Sentinel 4-Wheel Dropside - Paul Bros ➔
Ref: DG099002 £4.99
Approx length 90mm



LIMITED EDITION
1,500 models

Sentinel 6-Wheel Dropside - Hazell & Sons ➔
Ref: DG081002 £4.99
Approx length 88mm



LIMITED EDITION
2,000 models

1934 Chevrolet Drinks Van - John Smith's ➔
Ref: DG026022 £4.99
Approx length 82mm



LIMITED EDITION
2,000 models

Sentinel 4-Wheel Dropside - General ➔
Ref: DG088015 £4.99
Approx length 90mm



post your order to: **Corgi Classics Ltd., FREEPOST SO 4438, Southampton SO14 0HS** (no stamp needed)

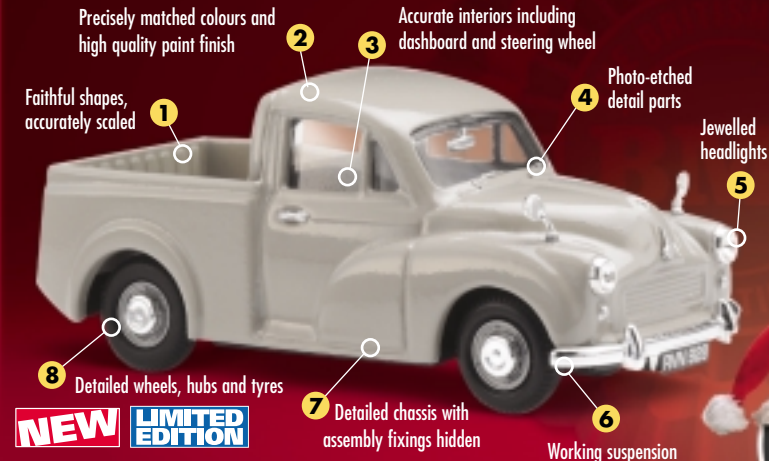
buy online at **www.corgi.co.uk**

10

11

Collectables | Vanguard

Continuing the post-war history of British automotive manufacture, this selection from Ford, BMC and Rover virtually spans those sixty years, from the van modification of Alec Issigonis's 1948 Minor to MG-Rover's muscular 21st Century MGZ. All models are produced to exact 1:43 scale, featuring accurate body shapes and precisely matched paint colours, detailed interiors and photo-etched chrome trim.



Morris Minor Pickup - Sandy Beige

For a trip down Memory Lane, this one takes some beating! Modified from Issigonis's original 1948 Minor, the Light Commercial Vehicle variant was built with a chassis aft of the cab, so it could take a variety of bodies. Our replica features working suspension, jewelled headlights and detailed wheels, hubs and tyres.

Ref: VA08303 £11.99 Scale 1:43 Approx. length 84mm



Austin Healey 100-Six - Old English White

First shown by Donald Healey as the prototype 'Healey 100' at the 1952 Earl's Court Motor Show, it went on to become a new marque that would sell worldwide. This replica matches the Old English White paintwork, as well as accurately observed chrome trim.

Ref: VA05105 £11.99 Scale 1:43 Approx. length 92mm

Princess 1800HL - Brooklands Green

Produced from new tooling for 2006, this 1:43 scale replica reproduces the attractive but ultimately unsuccessful Leyland 1970s Princess. Features include working suspension, detailed interior, jewelled headlights, photo-etched chrome parts, and precisely matched paint colour.

Ref: VA10200 £11.99 Scale 1:43 Approx. length 105mm

PRINCESS ALSO AVAILABLE IN POLICE LIVERY (VA10201)



Buy any 2 Vanguards & get the cheapest HALF PRICE!



Ford Cortina MKIII - Sapphire Blue

Announced in October 1970, the MkIII Cortina went on to sell over 1.1 million, outselling both its predecessors. Our replica is accurate in every detail, from the 'coke bottle' shoulders to the precisely matched Sapphire Blue paintwork.

Ref: VA10300 £11.99 Scale 1:43 Approx. length 98mm



Ford Sierra Sapphire Cosworth - Turbo Systems

Turbo Systems specialise in modifying cars to give real performance. What better way to get that off to a flying start than with the iconic Cosworth? This replica features detailed wheels, hubs and tyres, working suspension and detailed interior.

Ref: VA10005 £12.99 Scale 1:43 Approx. length 104mm

MGZT - Goodwood Green

MG-Rover's first big product launch established the MG Z in the forefront of performance sports saloons. This 1:43 scale replica reproduces the exact stylish lines and precisely matches the original Goodwood Green paintwork.

Ref: VA09305 £11.99

Scale 1:43 Approx. length 105mm



Rover 3500 (P6) - Tobacco Leaf

Reproducing the Rover P6 of 1963, this replica features accurate body shape, precisely matched paint colours, detailed interior, jewelled headlights, working suspension and detailed wheels, hubs and tyres.

Ref: VA06514 £11.99 Scale 1:43 Approx. length 106mm

order by phone on **023 8024 8844** 8am - 8pm, 7 days a week

buy online at **www.corgi.co.uk**



The year 2007 will mark the Centenary of Vauxhall Motors, and to celebrate the occasion we are now issuing a Special Limited Edition set of four 1:43 replicas of milestone models in the company's post-World War Two era. Two other great British marques are represented by new releases, both Limited Editions: Rootes by the newly tooled Hillman Avenger and Triumph by the Stag finished in sensational Java Green.



LIMITED EDITION

Hillman Imp Californian - Gold Bronze

Replicating something of a rarity (only 6,122 Imp Californians were ever built), this 1:43 scale model features the accurately raked screen and fastback body style of the original, as well as the precisely matched Gold Bronze paint colour, the detailed interior and the photo-etched chrome parts.

Ref: VA04007 £9.99 Scale 1:43 Approx. length 83mm

Triumph Stag - Java Green

One of the most beautiful cars of its generation, the Stag unfortunately gained a reputation for unreliability, one of the few characteristics of the original not replicated in our 1:43 scale model. From its jewelled headlights to the detailed interior, from working suspension to the photo-etched chrome trim, not to mention the dazzling Java Green, the model captures the unique panache of the original.

Ref: VA10103 £11.99 Scale 1:43 Approx. length 112mm



NEW

LIMITED EDITION

NEW TOOLING

AVENGER ALSO AVAILABLE IN POLAR WHITE (VA10401)

Hillman Avenger - Bitter Green

Produced from new tooling for 2006, this Hillman Avenger comes in the precisely matched Bitter Green paint colour of the original. Other features include working suspension, photo-etched chrome trim, a detailed interior with dashboard and steering wheel, detailed wheels, hubs and tyres, and jewelled headlights.

Ref: VA10400 £11.99 Scale 1:43 Approx. length 83mm



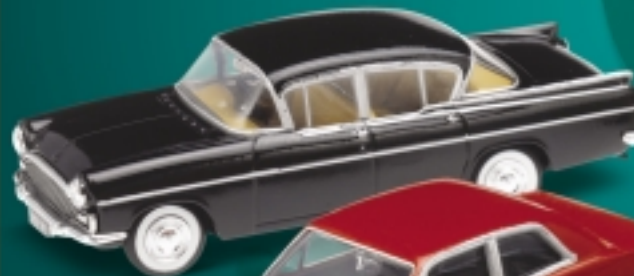
NEW

LIMITED EDITION

Vauxhall Cavalier MkII SRi 130 - Carmine Red

The SRi was the ultimate Cavalier, and the top performance bargain of its era. Details of our replica incorporate front fogs, alloy wheels and SRi130 decals. It also features working suspension, detailed chassis and a detailed interior.

Ref: VA09804 £11.99 Scale 1:43 Approx. length 100mm



NEW

LIMITED EDITION

Vauxhall: what's in a name?

Although Vauxhall Motors became a separate company in 1907, the origins of Vauxhall in fact go back even further: the Scottish engineer Alexander Wilson set up an iron works in Lambeth as long ago as 1857. And the name? We must go back to the Middle Ages, and a French soldier, Fulk le Breant, who married an heiress whose Lambeth home then became known as Fulk's Hall, later corrupted to Vauxhall.

Vauxhall Motors Centenary 4-Piece Set

Vauxhall Motors was set up in 1907, complete with its famous Griffin emblem which remains in proud use today, 100 years later. To mark this momentous milestone in the company's history, this four model set, complete with special anniversary packaging, consist of four particularly successful models: the Velox, Viva HB, Cavalier MkII and Astra MkV.

Ref: VX1004 £49.99 Scale 1:43

Approx. lengths: Velox 115mm, Viva 96mm, Cavalier 100mm, Astra 97mm



14

NEW

LIMITED EDITION

post your order to: **Corgi Classics Ltd., FREEPOST SO 4438, Southampton SO14 0HS** (no stamp needed)

buy online at **www.corgi.co.uk**



15

One of the most enduring traditions in the Vanguard range has been the police vehicle theme, here represented by the newly released Vauxhall Astra in the colours of Greater Manchester Police, as well as two recently issued Limited Editions. And Land Rover invites you to take up the G4 Challenge, with this rugged pair of performers from the ultimate global adventure.



Vauxhall Astra - Greater Manchester Police

The Vauxhall Astra has been the standard issue section car of Greater Manchester Police for some years. Features include working suspension, detailed interior, wheels, hubs and tyres, and even the distinctive blue roof livery to aid aerial recognition, a key aspect of today's integrated police operations.

Ref: VA09406 £14.99
Scale 1:43 Approx. length 97mm



LIMITED EDITION

Ford Cortina MkIII 2000GT - Lancashire Constabulary

The MkIII Cortina 2000GT was an especially popular police car, as it could turn on impressive speeds as and when required, particularly on traffic duties. This replica features photo-etched chrome detail, fine detail wipers, working suspension, and detailed wheels, hubs and tyres.

Ref: VA10301 £12.99 Scale 1:43 Approx. length 98mm



LIMITED EDITION

Jaguar XJ6 Series 1 4.2 - Dumfries & Galloway Constabulary

The original of our model was attached to Dumfries Traffic Department between 1973 and 1975, the ideal high-speed pursuit vehicle. The model features working suspension, jewelled headlights and detailed wheels, hubs and tyres.

Ref: VA08613 £12.99
Scale 1:43 Approx. length 112mm



LIMITED EDITION

Land Rover Defender Van - Epsom Green

Britain's most enduring working vehicle, here a long wheel base commercial van variant, has been through more adaptations than almost any, for the simple reason that it can do just about anything called for.

Ref: VA09701 £12.99 Scale 1:43 Approx. length 105mm



NEW LIMITED EDITION

Range Rover/Defender 110 Two-Piece Set - G4 Challenge

Billed as 'the ultimate global adventure', the Land Rover G4 Challenge takes the multi-sport and driving challenge to its limits, travelling from the jungles of South-East Asia to the Andes. Packed with many features, The Range Rover also offers working suspension.

Ref: LR2002 £44.99 Scale 1:43
Approx. lengths: Range Rover 115mm, Defender 105mm



NEW LIMITED EDITION

The G4 Challenge: would you be up to it?

"To be eligible, applicants must be willing and able to participate in physical activities such as, but not limited to: 4x4 driving, mountain biking, abseiling/rappelling, kayaking, climbing, snow shoeing, obstacle courses and the like. Applicants must also be willing and able to participate in intellectual activities such as, but not limited to navigating, problem solving, strategic planning, written and verbal testing, interviews, presentations and the like."

Whew!

Christmas just got even Christmassier, with this trio of Winter Specials. Yes, loaded aboard the 1:50 scale ERF ECT Flatbed is none other than the Trafalgar Square tree, the annual gift from the Norwegian capital city to our own. And both dioramas feature dramatic cold cast settings for the models; the Gloster Gladiator in the snow of Finland, and the Land Rover in the hazardous environment of a mountain rescue patrol.

J-8A Gladiator with Skis & Diorama - 284/F Royal Swedish Air Force, Finland 1940 🐼
Modified by the replacement of the conventional undercarriage by skis, the original of this 1:72 scale Gloster Gladiator took part in the first air combat success against the Soviets on the 12th January 1940. The squadron of the Royal Swedish Air Force had been deployed as a volunteer unit in support of the Finns against the Soviet offensive. The silver paint overspray served as disruptive camouflage, and the aircraft was badged with Finnish markings.
Ref: AA36204 £39.99 Scale 1:72
Approx. wingspan 136mm



NEW LIMITED EDITION 2,410 models

LANDING SOON - AN ATMOSPHERIC WINTER AVIATION DIORAMA!



NEW LIMITED EDITION 2,010 models

Land Rover Defender & Diorama - Calder Valley Search & Rescue 🐼
This diorama attempts to convey the type of conditions in which the original of our 1:43 scale replica has so often to perform in the South Pennine hills. This year marks the 40th Anniversary of the Calder Valley Search & Rescue Team, which consists entirely of volunteers financed 100% by charitable donations. The model and the separately cold-cast diorama scene have been modelled from an actual photograph.
Ref: CV1002 £29.99 Scale 1:43 Approx. length: Defender 105mm

ERF ECT Flatbed & Christmas Tree Load - Beck & Pollitzer 🐼
Operating over 50 tractor units and a range of low loaders, semi-Hows and extendable flats, the London firm of Beck & Pollitzer offers carrying capacity of up to 150 tonnes. This 1:50 scale replica of an ERF ECT with its flatbed trailer and highly seasonal load offers a detailed cab interior, realistic air lines, detailed chassis and separately applied rear view mirrors.
Ref: CC13422 £89.99 Scale 1:50 Approx. length 345mm



NEW LIMITED EDITION 1,010 models

post your order to: **Corgi Classics Ltd., FREEPOST SO 4438, Southampton SO14 0HS** (no stamp needed) buy online at **www.corgi.co.uk**

Collectables | Road Transport

The Road Transport range probably represents the ultimate in the art of precision die-cast model design and engineering. The models feature realistic air lines, detailed cab interiors, fine detail wipers and poseable wheels, and some also offer opening bonnets and tilting cabs. Both the Volvo FH in the colours of Eddie Stobart and the Mercedes-Benz Actros of Yuill & Dodds are produced from new tooling for 2006.

DAF XF Super Space Cab - Beamish Transport

The original of our replica operates in the fleet of the County Durham haulier specialising in car and caravan transporters. The model features the authentic livery and intricate badging of the original.

Ref: CC13232 £34.99 Scale 1:50
Approx. length 125mm



LIMITED EDITION
2,710 models

NEW **LIMITED EDITION**
2,710 models

Mercedes Benz Actros - Yuill & Dodds

Appearing for the first time in the colours of the Scottish haulier, this newly tooled Actros was to be seen at Truckfest 2006, the showcase of the UK's road transport industry. The model features a detailed cab interior, realistic air lines and detailed wheels, hubs and tyres.

Ref: CC13808 £34.99 Scale 1:50
Approx. length 125mm

MAN TGA Curtainside - Woody's Express

Based in Stornoway on the Isle of Lewis in the Hebrides, Woody's Express Parcels offers both a parcels and goods delivery service daily throughout the Outer Hebrides, the Inverness area, Aberdeen and Glasgow. One of the 25-strong fleet, our replica features a detailed cab interior and painstakingly matched livery.

Ref: CC13420 £64.99 Scale 1:50
Approx. length 345mm



NEW **LIMITED EDITION**
2,710 models



GET A LOAD OF
THIS GREAT
MODEL!

Ford Transit Van - Scott Trawlers

This Ford Transit features the livery of Dumfries based Scott Trawlers Ltd. The model includes photo-etched wipers, new and highly detailed wheels with rubber tyres, separately applied rear view mirrors and a detailed chassis.

Ref: CC07810 £19.99 Scale 1:43
Approx. length 126mm



NEW **LIMITED EDITION** **MODIFIED TOOLING**
2,760 models

Volvo FH Curtainside - Eddie Stobart

Produced from new tooling for 2006, the Volvo FH is the latest in the exquisite range of tractor units that make up Corgi's Hauliers of Renown series. The model features detailed cab interior and the very latest Eddie Stobart livery.

Ref: CC14002 £64.99
Scale 1:50 Approx. length 345mm



NEW **LIMITED EDITION** **NEW TOOLING**
3,810 models



LIMITED EDITION
1,960 models

DAF XF Curtainside - James Irlam & Sons

The James Irlam fleet is unusual in that it consists entirely of high specification DAF units, each operating for a maximum of three years. This 1:50 scale XF replicates a relative newcomer to the fleet, and features a detailed cab interior, poseable wheels, realistic air lines, a detailed chassis, and fine detail wipers and rear view mirrors.

Ref: CC13231 £64.99 Scale 1:50 Approx. length 345mm

20

order by phone on **023 8024 8844** 8am - 8pm, 7 days a week

buy online at **www.corgi.co.uk**



21

Collectables | Road Transport



NEW **LIMITED EDITION** 2,510 models **MODIFIED TOOLING**

Ford Transit Van - McCulla

This 1:43 scale Limited Edition comes in the livery of the temperature controlled storage and distribution operator. Produced from modified tooling, the model features photo-etched wipers, new and highly detailed wheels and rubber tyres, fine detail rear view mirrors and a highly detailed chassis.

Ref: CC07806 £19.99

Scale 1:43 Approx. length 126mm



NEW **LIMITED EDITION** 2,510 models **MODIFIED TOOLING**

Ford Transit Van - Ian Hayes Haulage

Produced from modified tooling for 2006, this Limited Edition comes in the livery of Ian Hayes Haulage. The model features photo-etched wipers, new and highly detailed wheels and rubber tyres, fine detail rear view mirrors and a highly detailed chassis.

Ref: CC07809 £19.99 Scale 1:43 Approx. length 126mm

Foden Alpha Aggregate Tipper - J.H. Jones & Son

The Foden Alpha features all that is best in state-of-the-art precision die cast modelling. Reproducing a vehicle in the Colwyn Bay-based haulier J.H. Jones & Son, features include a detailed chassis, cast roof-top exhaust system, detailed cab interior and authentic livery.

Ref: CC13901 £44.99 Scale 1:50 Approx. length 185mm



22 **LIMITED EDITION** 1,670 models **NEW TOOLING**



NEW **LIMITED EDITION** 2,010 models

ERF EC Aggregate Tipper - Brian Harris Transport

When the Dartmoor-based haulage firm of Brian Harris Transport closed down in March 2001 and the fleet sold off, there was a real sense of loss in the road haulage industry, as the company could trace its roots right back to 1946 and the original Harris & Miners. Let this handsome tipper serve as our tribute, with its detailed cab interior, opening tipper, and the meticulously copied livery and signwriting of the original.

Ref: CC11913 £44.99 Scale 1:50 Approx. length 185mm



Scania Curtainside - Pollock

Enter the world of Corgi's 'Sights and Sounds' range, a new concept in precision die-cast modelling that adds a new dimension to the art. Features include working front and rear lights, trailer marker lights along lower sides, brake/stop lights, reversing lights with warning horn and hazard warning lights. There's sound too: engine start and idle, engine start/idle/drive away, engine start/idle/reverse with warning horn, pneumatic brake and air horn, all controlled by a remote keyring holder.

Ref: CC12931 £99.99 Scale 1:50 Approx. length 345mm



NEW **LIMITED EDITION** 1,510 models

Pollock: keeping it in the family

The celebrated haulage firm of Pollock was founded in 1935 by George Pollock. Nationalised along with everyone else in 1949, the firm became part of BRS until 1954, when partial de-nationalisation allowed George to set up again as an independent, which he did in Musselburgh. And the famous livery of turquoise, gold and red was born. In 1963 George's son Ian had the idea of individually naming vehicles and adding a different Scots tartan to their liveries, a tradition that continues to this day. Today's joint MDs are Ian's sons Scott (joined 1984) and Fraser (joined 1993).



post your order to: **Corgi Classics Ltd., FREEPOST SO 4438, Southampton SO14 0HS** (no stamp needed)

buy online at **www.corgi.co.uk**



Collectables | TV & Film Favourites

One of the strongest themes in Corgi's more than 40 years of producing precision die-cast 'character' models drawn from film and TV has been that of science fiction. That tradition endures to this day, with this selection from Captain Scarlet, Red Dwarf and Doctor Who, including the brand new Classic Angel Interceptor from Gerry Anderson's New Captain Scarlet. Look out for clever working features on some models!

Dr Who, Bessie, Dalek & K9

Friend and foe are reunited with this delightful set of four characters from Britain's favourite TV sci-fi programme. From 'mutant monstrosity' to the loyal robot dog and the figure of the good Doctor himself, what more endearing mementos could there be of a much-loved programme?

Ref: TY96201 £13.99

**Dr Who height 62mm,
Bessie length 75mm,
Dalek height 60mm,
K9 length 50mm**



BBC & logo © TM BBC 1996. DR WHO LOGO™ & BBC. DALEKS™ BBC & © BBC/TERRY NATION 1963. K9™ & © BBC.



Starbug 1 - Red Dwarf

When the main Red Dwarf spaceship goes missing, the transport ship Starbug comes into its own. But with no less hapless a career. Struck by a meteorite, infected with a virus by the Simulants to put the ship on a collision course, crash landing on a Gelf moon, Starbug is presented here - add it to your collection.

Ref: TY96402 £4.99

Approx. length 64mm

Mother Ship - Red Dwarf

The Mother Ship is where the whole series of wacky dimension-hopping misadventures begins. When mining around the moons of Saturn with a crew of 169, the mining ship Red Dwarf suffers a radiation leak that wipes out all but one human, the hapless Dave Lister, the chicken soup machine repair man.

Ref: TY96401 £4.99 Approx. length 120mm



Cheetah - Captain Scarlet

Gerry Anderson's New Captain Scarlet had its first UK air date on the 12th February 2005, and featured the Cheetah RRV (Rapid Response Vehicle). This detailed replica features a fixed seated Captain Scarlet figure, and pressure-activated side wings and rear spoiler.

Ref: CC96304 £9.99 Scale 1:36 Approx. length 115mm

Classic Spectrum Pursuit Vehicle - Captain Scarlet

This detailed replica SPV sports a wealth of working features, including drop down rear tracks, concealed missile firing mechanism and extending side door with fixed Captain Scarlet figure.

Ref: CC96301 £14.99 Approx. length 145mm



GERRY ANDERSON'S NEW CAPTAIN SCARLET



NEW

Classic Angel Interceptor - Captain Scarlet

New, and new from Gerry Anderson's new Captain Scarlet, is the Classic Angel Interceptor, a detailed die-cast replica that comes with a fixed-seated Destiny figure. The model is suitable for play by children from 3 years and older.

Ref: CC96305 £9.99

Approx. length 155mm



post your order to: **Corgi Classics Ltd., FREEPOST SO 4438, Southampton SO14 0HS** (no stamp needed)

buy online at **www.corgi.co.uk**



AE/GAP 2006 ©. Original Production CAPTAIN SCARLET © 1967 ITC. CAPTAIN SCARLET is used under license by Granada Ventures Limited

Collectables | TV & Film Favourites

Corgi's tradition of issuing models from film and TV dates back to as far as the 1960s, and endures to this day. No single theme demonstrates this more resoundingly than that of James Bond. The original model of the Aston Martin DB5 featured in Goldfinger came out in October 1965; today we can offer you both the DB5 and the DBS from Casino Royale, the latest of 007's adventures to reach the silver screen.



Aston Martin DBS - Casino Royale

This detailed die-cast replica reproduces the DBS featured in Casino Royale. Features include chromed rear view mirrors, opening doors, alloy wheels, a detailed interior and a seated James Bond figure.

Ref: CC03801 £11.99
Scale 1:36
Approx. length 130mm



Aston Martin DB5 - Casino Royale

As shortly to be seen in the 21st outing of James Bond, the DB5 remains the most enduring car in the 007 canon. This replica features the new Bahamas number plate from the film, chromed wing mirrors, opening doors, full interior and a seated Bond figure.

Ref: CC04309 £11.99 **Scale 1:36**
Approx. length 125mm

Aston Martin DB5 & DBS two-piece set- Casino Royale

Best of all, why not go for this boxed Limited Edition set that includes both Aston Martin models? The set comes in a briefcase style presentation box, an exclusively commissioned Casino Royale pack of cards with silver embossed edges, made by Cartamundi®, who produced the actual cards used in the film.

Ref: CC99194 £49.99 **Scale 1:36**
Approx. lengths: DB5 125mm, DBS 130mm



LIMITED EDITION
5,000 models



1990s Subway Rocket

The 1990s Bat Rocket comes to life with this 1:43 scale replica. The detailed die-cast model features a transparent cockpit canopy, a detailed interior and a rear engine cover that opens to reveal the cool turbo engine. Suitable for play by children of 3 years or older.

Ref: US77351 £4.99 **Scale 1:43**
Approx. lengths 117mm



NEW



LIMITED EDITION
5,000 models



Batman Bronze Age 2-piece Set

Packaged in a special presentation box, this two-piece set features both the 1970s and 1980s Batmobiles, accompanied by Batman and Robin white metal figures. Features of the detailed die-cast models include opening doors and detailed interiors.

Ref: US77347 £19.99 **Scale 1:43**
Approx. lengths: 1970 Batmobile 110mm, 1980 Batmobile 110mm



1960s Batmobile BMBV3

Modelled on a scale of 1:43, this 1960 Batmobile represents No. 3 in the sequence. It is detailed die-cast, and features a detailed interior and an opening hood (that's a bonnet to us). Suitable for play by children of 3 years and older.

Ref: US77350 £4.99 **Scale 1:43**
Approx. lengths 127mm



NEW

27

order by phone on **023 8024 8844** 8am - 8pm, 7 days a week

buy online at **www.corgi.co.uk**



James Bond materials © 1962-2006 Danjaq, LLC and United Artists Corporation. All Rights Reserved.
007 TM and related James Bond Trademarks are trademarks of Danjaq, LLC licensed by EON Productions Limited

Collectables | Superhaulers

The 1:64 range of Superhaulers offers an exceptionally economical way to build a collection of die-cast models. Most incorporate working features such as opening rear doors and de-coupling trailers, making them ideal as an introduction to children as young as 3 years old. One of the most attractive features of these models is the broad 'canvas' they offer to the signwriter's art.



DAF 95 & Curtainside Trailer - Christian Salvesen

Featuring the striking new Christian Salvesen livery, this 1:64 scale model of the new DAF 95 & its de-coupling curtainside trailer also offers opening rear doors.

Ref: TY87017 £7.99
Scale 1:64
Approx. length 255mm



MAKES A GREAT STOCKING FILLER FOR ONLY £7.99!



Scania Cab & Car Transporter - Car Trans

The new Transcar livery shows off to best effect on this great rig. Working features include de-coupling trailer and elevating ramps.

Ref: TY86635 £7.99 **Scale 1:64** **Approx. length 305mm**

Argos Superhauleder

Why shop for it when you can Argos it? This Argos articulated vehicle offers detailed cab, opening rear doors and de-coupling trailer.

Ref: TY86818 £7.99 **Scale 1:64**
Approx. length 255mm

Scania Cab & Fuel Tanker - BP Ultimate

This two-axle Scania and its de-coupling tanker are decorated in the very latest BP livery. Chromed wheels, glazed cab windows and hoses are some features of the model.

Ref: TY86634 £7.99 **Scale 1:64** **Approx. length 255mm**



Volvo Curtainside - Weetabix

This 1:64 replica offers one of Britain's best-loved brand liveries, featuring a de-coupling trailer with opening rear doors.

Ref: TY86728 £7.99 **Scale 1:64** **Approx. length 270mm**

ALL Superhauleders are only £7.99!

Volvo Cab & Curtainsider - Marmite

Love it or hate it, there's no mistaking the distinctive livery of Marmite! The famous spread is immortalised with this Volvo, complete with de-coupling trailer.

Ref: TY86729 £7.99 **Scale 1:64** **Approx. length 255mm**



B&Q Superhauleder

A recent addition to the Superhauleders fleet comes in the shape of this striking B&Q artic. The model features opening rear doors and de-coupling trailer.

Ref: TY86733 £7.99 **Scale 1:64**
Approx. length 255mm



28

Find more products and offers on-line @ www.corgi.co.uk

post your order to: **Corgi Classics Ltd., FREEPOST SO 4438, Southampton SO14 0HS** (no stamp needed)

buy online at www.corgi.co.uk



29

Collectables | Mini Mania

Alec Issigonis's icon of the 1960s remains one of the most astonishing happenings in the 50 year history of Corgi. Did you know that Corgi sold more models of the classic Minis than the makers of the original Mini ever did? Will this happen with the new BMW Mini? It's up to you, especially with a price reduction of over £10,000 off the original!



WORKING FRONT LIGHTS!

LIMITED EDITION
4,110 models

Classic Mini - Italian Job Rally 2005

Launched in 1980 to raise funds for needy children, the Italian Job Touring Rally endures as a pan-European drive. Our replica models the car driven by Team 66 in the 2005 competition, and features working headlights, detailed interior and accurate rally badging.

Ref: CC82247 £14.99

Scale 1:36 Approx. length 85mm



LIMITED EDITION
4,990 models

Mini 7 Racing Club - Peter Thompson

2005 Mini 7 Championship winner Paul Thompson consistently finished in the top 5 of every race. As well as the meticulously copied livery and badging, the model features opening doors and a detailed chassis.

Ref: CC82249 £11.99

Scale 1:36 Approx. length 85mm

WORKING FRONT LIGHTS!



NEW

LIMITED EDITION
3,320 models

Mini Innocenti Cooper Export - Rob Stacey

Built in 1974, and initially registered in Monaco, this Mini has since specialised in competing in historic events that recall the heyday of the Cooper's dominance of the rally circuit. The model has working headlights and accurate badging.

Ref: CC82250 £14.99

Scale 1:36 Approx. length 85mm



LIMITED EDITION
3,470 models



WORKING FRONT & REAR LIGHTS!

BMW Mini Cooper S (St Andrew's Cross) - Hyper Blue Metallic

Ref: CC86522 £19.99

Scale 1:36 Approx. length 90mm

BMW Mini Cooper S (St George's Cross) - Chili Red

Ref: CC86523 £19.99

Scale 1:36 Approx. length 90mm



WORKING FRONT & REAR LIGHTS!

WORKING FRONT & REAR LIGHTS!



BMW Mini Cooper - Park Lane

New from BMW for 2006, the Park Lane Edition features a map of London's famous thoroughfare running down the front wing of the car. The model also features a detailed interior and opening doors, as well as working front and rear lights.

Ref: CC86528 £19.99

Scale 1:36 Approx. length 90mm

BMW Mini Cooper - Checkmate

In its 'reincarnation' as the BMW Mini Cooper, the fab Mini of the swinging 60s lives on, typified by this stylish chequered design. Other features include working front and rear lights, detailed interior and fully opening doors.

Ref: CC86526 £19.99

Scale 1:36 Approx. length 90mm



WORKING FRONT & REAR LIGHTS!

BMW Mini - One Seven

One classic Mini tradition is the almost infinite variety of livery designs, here exemplified by the stylish number 7 adorning the front wings. Other features are detailed interior, opening doors, and working front and rear lights.

Ref: CC86527 £19.99

Scale 1:36 Approx. length 90mm



WORKING FRONT & REAR LIGHTS!

NEW

order by phone on **023 8024 8844** 8am - 8pm, 7 days a week

buy online at **www.corgi.co.uk**



31

Collectables | Trackside

One of Corgi's finest legacies from the financial rescue of the wonderful Lledo stable has been the 1:76 scale series of vintage and veteran commercials from long ago. The Trackside range evokes a streak of nostalgia for the days of uncluttered roads, such as the ubiquitous and distinctive variety of endearing lightweight Scammells pottering about on their rounds.

Bedford CA Van - Royal Mail

Another newcomer to the Royal Mail series of Trackside models comes in the form of the Bedford CA, launched in 1952 as a 10/12 cwt van featuring semi-forward control, and continuing in production until 1969.

Ref: DG203004 £3.99

Scale 1:76 Approx. length 55mm



NEW

Scammell Handyman with Flatbed Trailer & Timber Load - Reid's Transport

The original of our Limited Edition was launched in 1962 as a fibreglass cab designed by Giovanni Michelotti. It was one of the few tractors of that period that could legally couple to a 40 ft trailer! Here it is presented complete with a flatbed trailer and load.

Ref: DG175015 £12.99 Scale 1:76 Approx. length 130mm



NEW

LIMITED EDITION
2,010 models

NEW **LIMITED EDITION**
3,010 models **NEW TOOLING**

Scammell Scarab with Stepframe Trailer - C.I.E.

Launched in 1948 and replacing the original Mechanical Horse, the Scarab proved one of Scammell's greatest successes. Aimed primarily at the railway companies, with its exceptionally tight turning circle, it remained in production for 20 years.

Ref: DG148019 £11.99 Scale 1:76 Approx. length 122mm



NEW **LIMITED EDITION**
2,010 models

Noddy Van - Gregorays

Collectors of Noddy vans will welcome this addition to the theme, this time in the livery of the general haulage firm of J. Gregory & Sons of Manchester. Like the original, this is a no-frills, no-nonsense hard-working stalwart.

Ref: DG174011 £5.99 Scale 1:76 Approx. length 90mm

Morris LD Van - J & M Parcel Service

The original Morris Commercial LD van with its 'beehive' grille was launched in 1953. This model is decorated in an authentic livery of the Bristol-based parcel delivery company.

Ref: DG201003 £3.99 Scale 1:76

Approx. length 60mm



Morris J2 Van - BMC

This model reproduces the forward control Morris J2 1.5 cwt van, featured here in the livery of the British Motor Corporation.

Ref: DG202002 £3.99

Scale 1:76 Approx. length 55mm

Scammell Mechanical Horse with Stepframe Trailer - Post Office Telephones

Produced from new tooling for 2006, Scammell's legendary Mechanical Horse joins the Trackside range of vintage commercials in the highly collectable Post Office Telephones livery.

Ref: DG199009 £11.99

Scale 1:76

Approx. length 117mm



NEW

LIMITED EDITION
3,310 models

NEW TOOLING

Scammell Contractor with Trailer & Tender Load - ALE

Abnormal Load Engineering (ALE) was set up in Stafford as recently as 1986. The model features the Contractor with a six-axle low load trailer and LNER tender load.

Ref: DG198008 £24.99

Scale 1:76 Approx. length 265mm



LIMITED EDITION
3,010 models

post your order to: **Corgi Classics Ltd., FREEPOST SO 4438, Southampton SO14 0HS** (no stamp needed)

buy online at **www.corgi.co.uk**



BRS: a forgotten name, but a living legacy

It may be a measure of the pointlessness of nationalised industries that the name of British Road Services doesn't even appear in the 1988 edition of The Hutchinson Encyclopedia! Formed in 1948 by the wholesale appropriation of independent transport and haulage companies the length and breadth of these islands, BRS was already in doubt as early as 1954, when partial de-nationalisation took place. But it did bequeath one valuable legacy: the superb range of 1:76 scale Trackside models in the BRS livery!

Scammell Townsman, Dropside Trailer & Load - BRS

The Scammell Townsman makes its debut in the Trackside range. It is shown here in the livery of British Road Services, the nationalised road transport conglomerate formed in 1948, and comes complete with a 'tarpaulin'-covered load.

Ref: DG206001 £11.99 Scale 1:76 Approx. length 110mm



NEW **LIMITED EDITION** 3,160 models **NEW TOOLING**



LIMITED EDITION 2,010 models

Leyland Octopus Tanker - Tunnel Cement

The Octopus was the largest model in Leyland's post-war 600 series, weighing in at 22 tons gross vehicle weight. This model features the livery of Tunnel Cement, with authentic cab door badging.

Ref: DG176021 £11.99 Scale 1:76 Approx. length 120mm



LIMITED EDITION 2,010 models

Guy Pantechnicon - Luckings

This replica offers a real dose of nostalgia for the footlights of yesteryear. Can't you smell the greasepaint? Every detail of the wondrous mixture of typographical styles of the theatrical movers is authentically reproduced.

Ref: DG146014 £11.99 Scale 1:76

Approx. length 100mm



LIMITED EDITION 2,260 models

ERF LV & Trailer with Sack Load - W.H. Malcolm

Launched in 1962, the glass fibre-cabbed ERF LV featured a large one-piece windscreen, replicated here in its authentic W.H. Malcolm livery. The de-coupling flatbed trailer comes complete with a sack load.

Ref: DG186012 £12.99

Scale 1:76 Approx. length 130mm



LIMITED EDITION 5,010 models **NEW TOOLING**

Scammell Contractor - Sunters

One of the most famous names in super heavy haulage graces this mighty Contractor. While the original 6 x 4 boasted a gross train weight of up to 240 tons, a small number of MkII Contractors offered a gtw of up to 450 tons.

Ref: DG198006 £12.99 Scale 1:76

Approx. length 120mm



LIMITED EDITION 2,250 models



LIMITED EDITION 2,290 models

Scammell Scarab Van Trailer - Eskimo Foods

With its tight turning circle, the Scarab was the ideal local 'shuttle' and delivery vehicle, and much favoured by the railways. Our model features a popular livery of the time.

Ref: DG148017 £9.99 Scale 1:76

Approx. length 110mm

Noddy Van - London Brick

The so-called 'Noddy' van was the outcome of British Road Service's quest for the ideal parcels van, developed as the Austin VA. Our model reproduces the van in the contemporary livery from the 1960s.

Ref: DG174010 £5.99 Scale 1:76 Approx. length 90mm

Scammell Mechanical Horse & Stepframe Trailer - Royal Mail

This Scammell Mechanical Horse and Stepframe Trailer reproduces the famous articulated lightweight truck launched in the 1930s. A must for all Royal Mail theme enthusiasts!

Ref: DG199008 £11.99 Scale 1:76

Approx. length 117mm



LIMITED EDITION 2,010 models

order by phone on **023 8024 8844** 8am - 8pm, 7 days a week

buy online at **www.corgi.co.uk**



Collectables | Warbirds | Corgi Collection

Why is it that the war machines of World War Two fascinate generations born after that horrific conflict? Part of the answer lies in the way in which the weapons of engagement were developed in order to give superiority to the side holding those weapons. From the Spitfire fighter to the King Tiger Tank, these dreadful weapons fuelled development of more peaceful applications.



NEW

Hawker Hurricane MkI - Flt Lt 'Pete' Brothers

Contrary to myth, the 'Hurri' was the main reason for victory in the Battle of Britain. In the interests of speed, 'Pete' Brothers made modifications to P2921, even having the external rivets filed down to reduce the drag on the aircraft.

Ref: WB99603 £9.99 Scale 1:72 Wingspan 167mm



Spitfire Mk1B - George 'Grumpy' Unwin

Flight Sergeant George Unwin flew both over Dunkirk and in the Battle of Britain; during the latter he shot down three Messerschmitt Bf109s. The Mk 1B differed from the 1A in that the armament introduced a 20mm cannon into each wing.

Ref: CS90460 £4.99 Wingspan 102mm



Junkers Ju-87 Stuka - Tropical Camouflage

With its vertical dive capability, the Stuka proved to be an exceptional anti-tank attack aircraft. The Stuka was lethal to the Russian tanks in the early stages of Operation Barbarossa.

Ref: CS90468 £4.99 Wingspan 106mm

King Tiger Tank - Hungary

This model reproduces one of the most fearsome vehicles of World War Two. Developed to counter the dreaded Soviet KV-1 heavy tank, the Tiger was used more often as a mobile heavy artillery piece than as an attack tank.

Ref: CS90478 £4.99 Approx. length 120mm



Stuart Tank 'Bellman' - Desert Rats

A fast, light tank, the too-lightly armoured Stuart proved no match for the new generation of panzers. 'Bellman' served with the 7th Armoured Division, known as the Desert Rats for their badge picturing a jerboa.

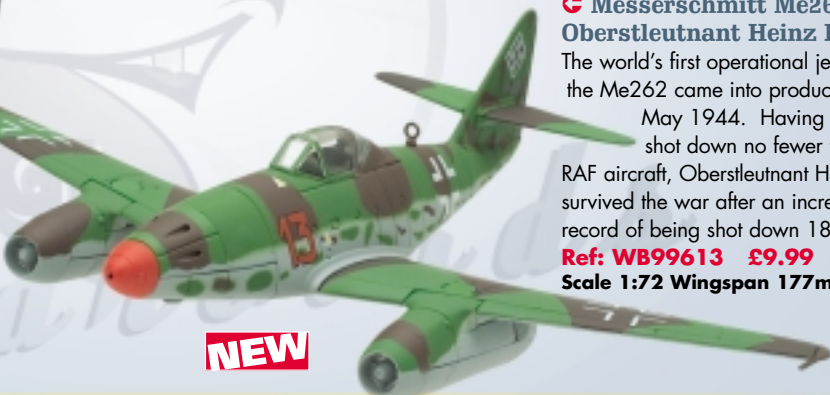
Ref: CS90475 £4.99 Approx. length 70mm



Supermarine Spitfire HFIXC - Flt Lt Otto Smik

The MkIX was probably the definitive version of the Spitfire, with its Rolls-Royce Merlin 12 cylinder in-line engine. The original was piloted by Flt Lt Otto Smik, the highest scoring ace of Slovak origin in WWII, killed in action in 1944 at the age of just 22.

Ref: WB99614 £9.99 Scale 1:72 Wingspan 155mm



NEW

Messerschmitt Me262A-1a - Oberstleutnant Heinz Bär

The world's first operational jet aircraft, the Me262 came into production in May 1944. Having earlier shot down no fewer than 10 RAF aircraft, Oberstleutnant Heinz Bär survived the war after an incredible record of being shot down 18 times!

Ref: WB99613 £9.99 Scale 1:72 Wingspan 177mm

36 see pack for your chance to own a **free SIGHTS & SOUNDS** model!

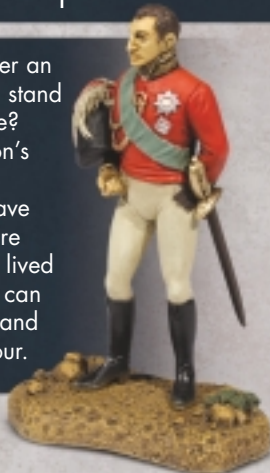
post your order to: **Corgi Classics Ltd., FREEPOST SO 4438, Southampton SO14 0HS** (no stamp needed)

buy online at **www.corgi.co.uk**

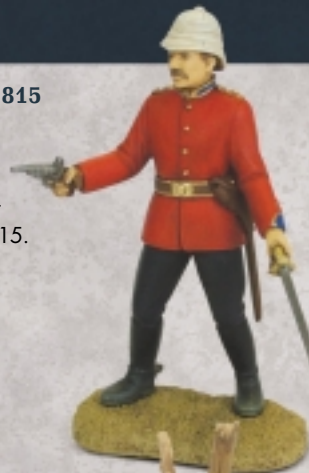


37

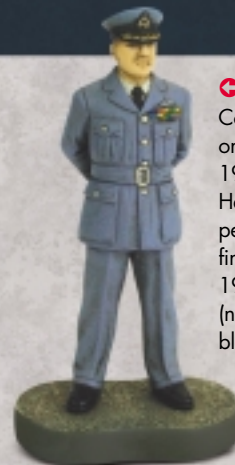
Ask yourself. If there was ever an issue about which you would stand and fight, what would that be? The carpet-bombing of London's East End in 1940 and after? The demand for women to have a vote even earlier? Here are some heroes of conflicts who lived through them, and which we can only imagine. Collect them, and stand astonished at their valour.



☛ Duke of Wellington 1815
Arthur Wellesley, 1st Duke of Wellington, the 'Iron Duke' (1769 – 1852), is best known as the victor over Napoleon at Waterloo on the 18th June 1815. He also pursued a successful political career, as MP first in Ireland then at Westminster, culminating in his appointment as Prime Minister in 1828.
Ref: CC59145 £9.99
Scale 1:32
Approx. height 54mm



☛ Lt JRM Chard VC 1879
John Rouse Merriott Chard (1847 – 1897) was one of the heroes commanding the British detachment at Rorke's Drift in January 1879, which repulsed a Zulu force of some 3,000 warriors, and in doing so won the highest number of VCs (11) ever awarded for any single action.
Ref: CC59154 £9.99
Scale 1:32
Approx. height 54mm



☛ 'Bomber' Harris 1942
Commissioned as Squadron Leader on the formation of the RAF in 1918, Sir Arthur Travers 'Bomber' Harris (1892 – 1984) almost personified the history of the RAF, finally as C-in-C Bomber Command 1942-5. There he pursued the (now controversial) strategy of blanket bombing German cities.
Ref: CC59153 £9.99
Scale 1:32
Approx. height 54mm



☛ Emmeline Pankhurst 1915
Emmeline Pankhurst (1857-1928) founded the Women's Franchise League in 1889, which was dedicated to winning the vote for women. With her daughter Christabel she went on to create the Women's Social & Political Union (1903), which fought for women's suffrage with increasing militancy. She was arrested on numerous occasions, imprisoned and while there undertook hunger strikes.
Ref: CC59152 £9.99
Scale 1:32 **Approx. height 54mm**



☛ German Lying Dead in Barbed Wire - Battle of the Somme
Perhaps it will provoke a degree of shock in some, but this model reflects the reality of trench warfare in World War One. Nowhere was this more apparent than on 1st July 1916, the first day of the Battle of the Somme, on which the British alone suffered 60,000 casualties. A major reason for scenes such as this was that the immense artillery barrages had failed to destroy the barbed wire defences prior to the infantry offensives on both sides.
Ref: CC59149 £14.99
Scale 1:32 **Approx. height 54mm**

British Paratrooper - Falklands 1982 ➔
In April 1982 Argentina occupied the British Falkland Islands, claiming the 'Islas Malvinas', as their own. So many thousands of miles from Britain, these windswept islands in the South Atlantic were surely not worth the fight? Or so they thought. Within an astonishingly short period of time, the British were despatching a very considerable task force, in which the paratroopers were to play a decisive part in our victory.
Ref: CC59155 £9.99
Scale 1:32 **Approx. height 54mm**



NEW

8 DIFFERENT SETS TO COLLECT!

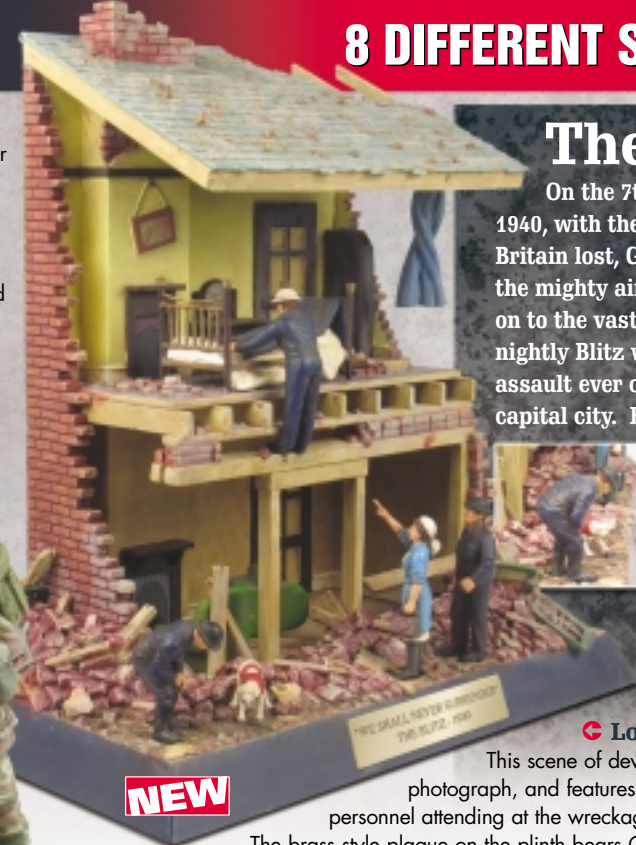
The Blitz

On the 7th September 1940, with the aerial Battle of Britain lost, Goering turned the mighty airborne forces of Nazi Germany on to the vast built-up areas of London. The nightly Blitz was then the most brutal aerial assault ever on the civilian population of a capital city. From September 7th to the 3rd November, an average of 200 German bombers attacked London every night. The heroes of those nights were the emergency services, often augmented by civilian volunteers, depicted here in this dramatic diorama.



☛ London Blitz Diorama

This scene of devastation is based on a contemporary photograph, and features figures of emergency service personnel attending at the wreckage of somebody's modest home. The brass style plaque on the plinth bears Churchill's implacable line: "We shall never surrender". A miniature Campaign Medal is included with this set.
Ref: CC59164 £79.99 **Scale 1:32** **Approx. height 275mm**



NEW

order by phone on **023 8024 8844** 8am - 8pm, 7 days a week

buy online at **www.corgi.co.uk**



Collectables | Mini Diorama

WORKING HEADLIGHTS!

The Monte Carlo Rally dates back to 1911, and is today regarded as the premier event in the world rally calendar. Though the celebrated BMC Works Mini Coopers scored many notable victories, Mini Coopers have also been entered by numerous 'privateers'. Both cars featured in this diorama, EYH 846C and L408 AUE, have competed as privateers for many years. EYH 846C has also competed in the 4th, 5th and 8th Monte Carlo Historique rallies for veteran rally cars.

Mini Rally Set Diorama - Monte Carlo Rally

This pair of 1:36 scale replicas reproduces two Mini Cooper S cars that have competed extensively over the years. EYH 846C was a Mk1 Austin Cooper 998, built in 1965, originally used for circuit racing, but later transformed into a rally car. L408 AUE is a Rover Mini Cooper 1.3i, converted into full rally spec. only when the original rally car was stolen from its trailer!

Ref: CC99196 £39.99 Scale 1:36
Mini length 85mm



A CENTREPIECE
TO ANY MINI
COLLECTION!

NEW

LIMITED
EDITION
2,110 models

Corgi & Device is a Registered Trade Mark of Corgi Classics Limited

buy online at www.corgi.co.uk

